

# REMKO RAV 30

*High-performance fans for  
construction and renovations*

*Operation Technology Spare parts*





## Contents

<i>Safety notices</i>	4
<i>Description of the unit</i>	4
<i>Commissioning</i>	5
<i>Decommissioning</i>	5
<i>Care and maintenance</i>	6
<i>Intended use</i>	6
<i>Customer service and warranty</i>	6
<i>Environmental protection and recycling</i>	6
<i>Technical data</i>	7
<i>Spare parts list</i>	7



**These operating instructions must be read carefully before commissioning/using the unit!**

**These instructions are part of the unit and must always be kept in the direct vicinity of the site of installation or on the unit. This operating manual is a translation of the German original.**

*We reserve the right to make changes; no liability for errors and misprints!*

# HIGH-PERFORMANCE FANS

## Safety notices

The units were subjected to extensive material, functional and quality inspections and tests prior to delivery.

The units can however constitute a hazard if used improperly by untrained persons or not for the intended purpose.

Always observe the following safety information:

- The locally applicable building and other regulations must be observed.
- The operator is responsible for correct installation of the units, correct electrical installation and safe operation of the units.
- The units must always be set up and operating in a stable manner.
- The units may be set up and operated only in an environment not at risk of fire or explosion.
- The units must not be set up and operated in aggressive environments.
- Protect the environment and yourself from any flying parts.

- Safety components such as protection grids must be neither dismantled nor decommissioned.
- The units must only be operated within the specified capacity limits.
- The air inlets including grilles must be kept free of dirt and loose objects at all times.
- The air inlet and outlet must not be closed.
- Never insert foreign objects into the device.
- The unit must not be subjected to a direct jet of water.
- Never allow water to enter the unit.
- All electric cables of the units must be protected against damage e.g. by animals, etc.
- The unit must not be transported during operation.
- People who use the unit must be familiar with the risks arising with the use of conveying fans.
- Use hearing protection when in the vicinity of the unit for a longer period of time.

## Description of the unit

The combination of a powerful axial fan and thoroughly conceived accessories for the connection of air distributor hoses makes RAV 30 a particularly versatile solution for aeration and ventilation, air circulation and cold or hot air transport, even over longer distances.

RAV 30 is also ideal for the effective support of dehumidifiers in the drying of buildings under construction.

Due to fast air movement, the layer of high air moisture on the material is broken up and the evaporation rate increases. Walls, ceilings, and floors thus dry faster! The higher the flow speed on the moist material surface, the faster the drying process takes place.

Depending on the respective environment and temperature, the drying time can be drastically reduced by the combination of dehumidifiers and the RAV 30 high-performance fan.

Through the use of additional fans, the evaporation is accelerated, whereby the drying process can be reduced by up to 50%.

The unit has tube connection adapters on both sides, enabling a high variety of uses.

The units are equipped with a 3-speed high-performance axial fan, operating hours counter, and mains cable with a 230 V Schuko safety plug.

The units comply with the basic health and safety requirements of the pertinent EU regulations and are easy to operate.

### NOTE

*Only authorised electricians may extend the connecting cable, taking into account the rating of the unit, cable length and local use.*

### ATTENTION

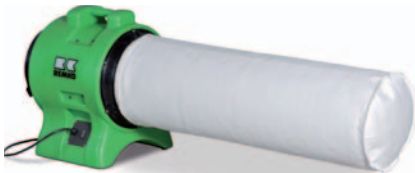
*When high-performance fans are used, people must be aware of any risks that arise.*

## Commissioning

### Before using for the first time

- The correct unit setup and assembly of any accessories used must be checked.

Example 1:



Optional dust bag # 1009535

Example 2:



Optional WL tube # 1009512

### ATTENTION!

**Always attach the tubes and dust bag with suitable straps or clamps.**

### Electrical connection

- The 230V electrical connection is implemented using a fitted mains cable with safety plug.
- Connect the mains plug with a properly installed and secured mains socket.
- All cable extensions must only be used uncoiled or unwound.

#### NOTE

*Electrical connection of the units must be made at a separate supply point using a residual-current-operated circuit-breaker according to VDE 0100 § 55.*

### Switching on the device

- Switch the unit to the desired power level using the 3-speed selector switch.



- When required, read the operating hours counter and note down the reading.

## Decommissioning

- Set the operating switch to the "0" position.
- Read the operating hours counter.

### For extended periods of non-use:

- Disconnect the unit from the mains supply.
- Clean the unit and store it in a dry location, free of dust and direct sunlight.



The unit can be stacked for space-saving storage.

## Care and maintenance

The units are virtually maintenance-free in normal operation. To ensure trouble-free operation, however, they should be inspected regularly and cleaned and/or repaired if necessary according to the respective conditions for use.

### Cleaning the units

- The units must be disconnected from the supply in all poles and locked to prevent unauthorised reconnection.
- The protective grids for the air inlets must be cleaned regularly and replaced in case of damage.
- Clean all air inlets and air outlet louvres.
- Remove the protective grid before cleaning the fan blade.
- Remove heavy soiling on the fan and fan housing with a soap solution.

- The units must be cleaned only dry or with a moist cloth and a small amount of soap solution if necessary.
- Under no circumstances use high-pressure cleaners or steam jet equipment.
- Do not use caustic cleaning agents or cleaning agents containing solvents.
- Avoid causing damage when using compressed air.

# HIGH-PERFORMANCE FANS

## Intended use

Based on their structural design and equipment, the units are conceived only for aeration and ventilation, air circulation, or dust extraction under observance of the technical data and safety information.

The portable unit conception permits a fast change of location and may be implemented only in the ex-works unit design.

The units must not be set up or operated on boggy or flooded foundations.

Damage due to incorrect operation or commissioning by unauthorised personnel is excluded from the warranty.

The units comply with the basic health and safety requirements of the pertinent EU regulations and have been multiply tested for perfect function at the factory.

### NOTE

*Operation for any other purpose than that described in these operating instructions is not permitted. Non-observance will result in all liability being disclaimed and invalidate the warranty.*

## Customer service and Warranty

The prerequisite for any warranty claims is that the customer or its recipient has returned the completed

### "Warranty Document"

included in delivery to REMKO GmbH & Co. KG at the time of the sale and commissioning of the equipment.

The units were repeatedly tested at the factory to ensure that they function correctly.

If any malfunctions should occur, however, which cannot be eliminated by trouble shooting measures performed by the operator, please consult your dealer or contract partner.

The manufacturer is not liable for any damage attributed to failure to observe the manufacturer's instructions or applicable statutory requirements or unauthorised changes to the units.

### NOTE

*Only authorised specialists may undertake repairs and maintenance.*

### ATTENTION

*Copyright  
Any copying of this document in whole or part or use for purposes other than that intended is strictly forbidden without the prior written permission of  
REMKO GmbH & Co. KG*



## Environmental protection and recycling

### Disposal of packaging

When disposing of the packaging material, please think of the environment.

Our units are carefully packed for transport and delivered in sturdy cardboard packaging on a wooden pallet, if necessary.

The packaging materials are environmentally-friendly and can be recycled.

By reusing packaging materials, you make a valuable contribution towards waste reduction and the conservation of raw materials.

***Only dispose of packaging material at the facilities provided.***

### Disposal of the old unit

Our unit production is subject to constant quality controls.

Only high-quality materials are used, the majority of which are recyclable.

Make your contribution towards environmental protection by disposing of your old unit in an environmentally-friendly manner.

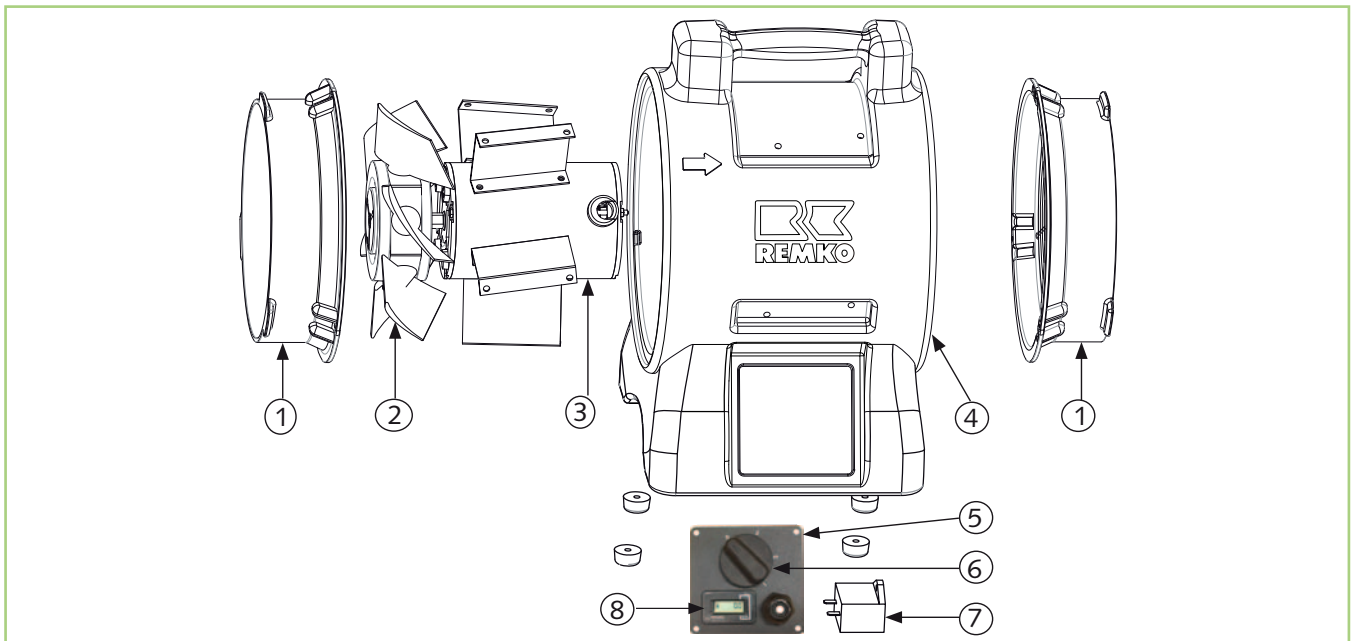
***Only dispose of your old unit at an authorised recycling facility or similar.***



## Technical data

Series		RAV 30
Design		Axial fan
Ventilation capacity, 3-stage	m <sup>3</sup> /h	3800/3400/3100
Max. pressure	Pa	280
Electrical connection	V/Hz	230/1~/50
Max. power consumption	Watt	650
Fuse protection (on site)	A	10
Max. current consumption	A	3.0
Type of protection	IP	44
Sound pressure level	dB (A)	76
Max. conveyor temperature	°C	40
Hose connection Ø	mm	300
Max. hose length	m	38
Dimensions - height/width/depth	mm	530/380/480
EDP No:		1610630
Weight	kg	15

## Spare parts list



No.	Designation	Ref. no.
1	Protective grid for air intake with tube connection adapter	1113040
2	Fan blade	1113041
3	Electric motor	1113042
4	Fan housing	1113043
5	Control panel	1113044
6	3-speed operating switch	1113045
7	Condenser	1113046
8	Operating hour counter	1113048
Not shown	Mains cable with plug	1113049

# REMKO INTERNATIONAL

*...and somewhere near you!  
Take advantage of our experience and advice*



## Consulting

Through intensive training, we ensure that the expert knowledge of our consultants is always up-to-date. This has given us the reputation of being more than just a good, reliable supplier. REMKO, a partner who helps solve problems.

## Sales

REMKO not only has an extensive sales network in Germany and abroad, but also unusually highly qualified sales experts. REMKO field employees are more than just sales representatives: they mainly provide our customers with consulting services in regard to air-conditioning and heating technology.

## Customer service

Our units operate precisely and reliably. If a fault should occur, REMKO Customer Service is there to help you. Our extensive network of experienced specialised dealers guarantees you a fast and reliable service.

## REMKO GmbH & Co. KG Klima- und Wärmetechnik

Im Seelenkamp 12      D-32791 Lage  
Postfach 1827        D-32777 Lage  
Telephone            +49-5232-606-0  
Fax                    +49-5232-606-260  
E-mail                info@remko.de  
Internet              www.remko.de

